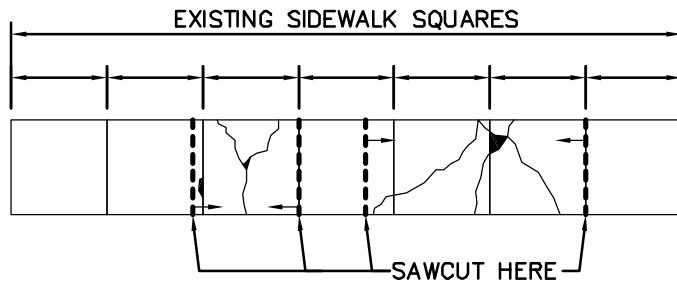
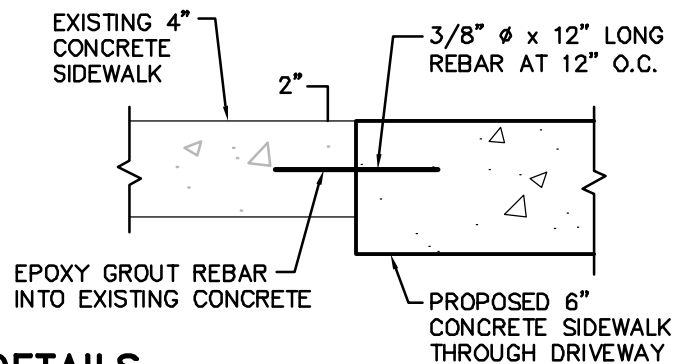
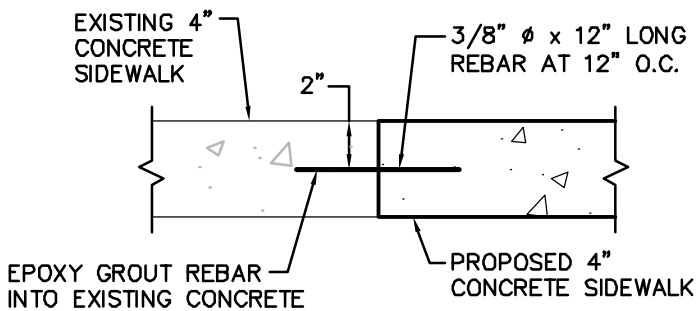


PLEASE EXERCISE CARE WHEN REMOVING MARKED SQUARES.  
 ADJACENT SQUARES DAMAGED AS A RESULT OF REPAIR WORK WILL BE  
 REQUIRED TO BE REPLACED AT THE OWNER'S EXPENSE.

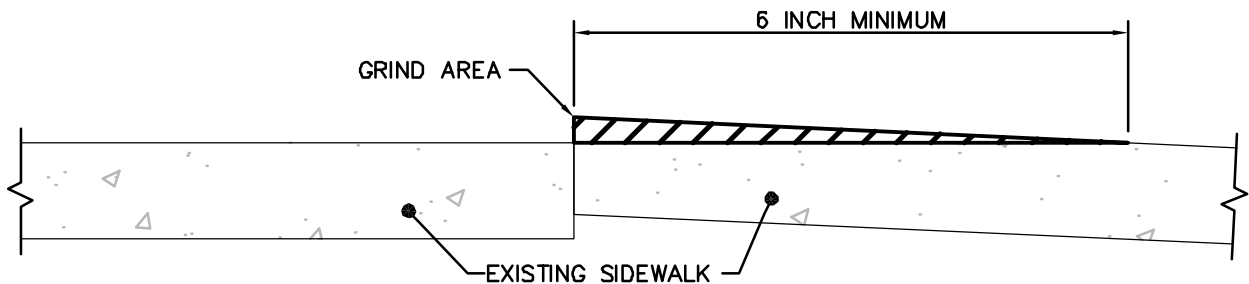


IF ARROWS ARE THROUGH A PARTIAL SQUARE  
 ADJACENT TO A SQUARE MARKED FOR REMOVAL,  
 THIS SQUARE MUST BE SAWCUT TO REMOVE  
 HAZARDS ON BOTH SQUARES; OR THE ENTIRE  
 ADJACENT SQUARE NEEDS TO BE REPLACED AS  
 WELL. SQUARE DIMENSIONS MUST BE MAINTAINED  
 AS CLOSE AS POSSIBLE TO A 4'x4' SQUARE.

### SAWCUT DETAIL



### JOINT DETAILS



### GRINDING DETAIL

## REPAIR OPTIONS:

### TYPE A

- COMPLETE REMOVAL AND REPLACEMENT OF THE PANELS
- MUD JACKING THE PANEL/LIFTING THE PANEL MAINTAINING CROSS SLOPE OF 1/4 INCH PER FOOT
- MILLING THE PANEL TO AT LEAST 6 INCHES BACK FROM VERTICAL EDGE CREATING SMOOTH TRANSITION FROM ONE PANEL TO ANOTHER.

### TYPE B1

- COMPLETE REMOVAL AND REPLACEMENT OF THE PANELS

### TYPE B2

- COMPLETE REMOVAL AND REPLACEMENT OF THE PANELS
- MUD JACKING THE PANEL/LIFTING THE PANEL MAINTAINING CROSS SLOPE OF 1/4 INCH PER FOOT

### TYPE C1

- COMPLETE REMOVAL AND REPLACEMENT OF THE PANELS

### TYPE C2

- COMPLETE REMOVAL AND REPLACEMENT OF THE PANELS
- PATCHING OR SEALING THE CRACKS OR CHIPS WITH A PATCH OR SEALING MATERIAL

### TYPE D1

- COMPLETE REMOVAL AND REPLACEMENT OF THE PANELS

### TYPE D2

- COMPLETE REMOVAL AND REPLACEMENT OF THE PANELS
- PATCHING THE SPALLED AREAS WITH A PATCHING MATERIAL

### TYPE E1

- COMPLETE REMOVAL AND REPLACEMENT OF THE PANELS

### TYPE E2

- COMPLETE REMOVAL AND REPLACEMENT OF THE PANELS
- REMOVE ALL VEGETATION/DEBRIS AND SEAL SEPARATION WITH A SEALANT OR NON-SHRINK GROUT